



**SHIWEN
MACHINERY**

**SHIWEN
CONSTRUCTION MACHINERY CO.**



SHIWEN
MACHINERY

COMPANY INFO



SHIWEN MACHINERY

25,000m²

WAREHOUSE AREA

1,000⁺ UNITS

VARIOUS MACHINES

1,000⁺ CLIENTS

ALL OVER THE WORLD



10+ YEARS
EXPORT EXPERTISE



24/7
ONLINE SERVICE



MULTI-LANGUAGE
CAPABILITY



VARIETY
CHOICE



HIGH-QUALITY
EQUIPMENTS



COMPANY INFO



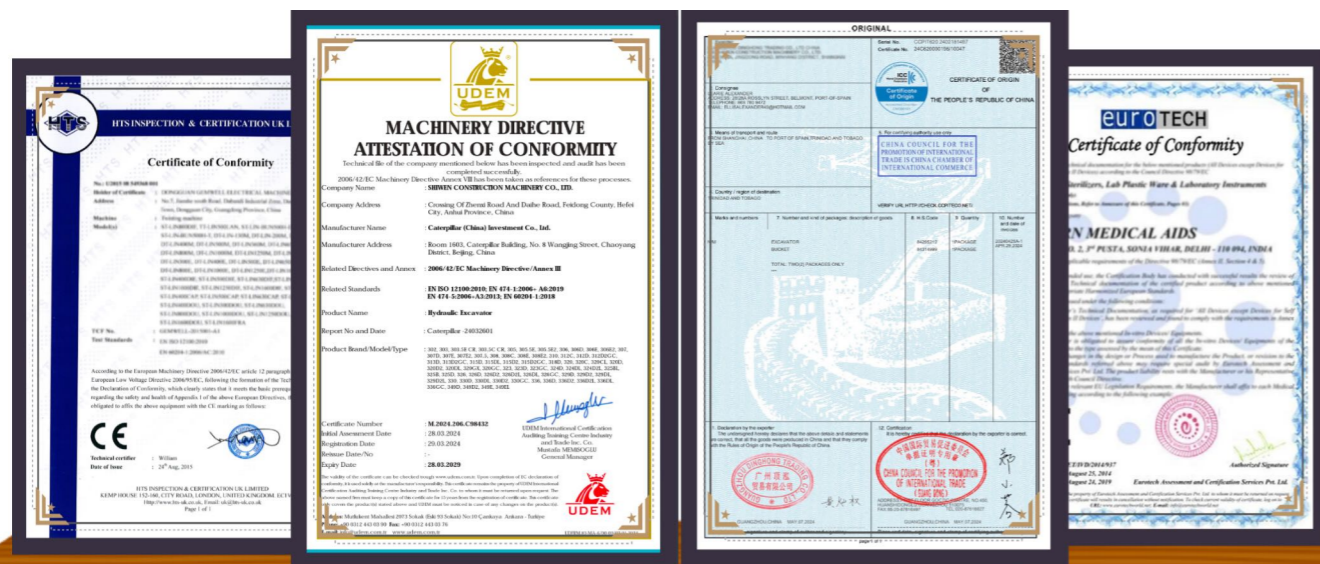
[About Us]

We, Shiwen Construction Machinery Co., Ltd, have specialized in the used construction machinery for more than 10 years.

Long-term supply various excavators, bulldozers, loaders, graders and cranes with CE and EPA certificates.

Each machine will be precisely inspected by the professional technicians and test driving for you.

Welcome to China and visit our company!
We will supply you with the best machines and competitive price.



[Why Choose Us]

- More than 10 years experience
- Support onsite/online inspection
- 24/7 customer service
- Terms of delivery: EXW, CIF, DDP
- Perfect after-sales service
- Various customized spare parts available



OUR SERVICE

INSPECTION & MAINTENANCE

We provides a comprehensive machinery refurbishment service that includes refitting and replacing wear-out and broken parts.

Our professional technicians handle repairing, painting, reconditioning, and general maintenance to ensure each construction equipment meets clients' required conditions.



PERFORMANCE TEST

Our professional QC team performs a comprehensive test of 15+ crucial components, including the engine, pump, boom, walking system, and other key parts of your construction equipment.

The whole machine will be debugged and calibrated before delivery to ensure the proper condition.



DELIVERY

For international orders and construction projects, timely and safe delivery is crucial. We work with professional shipping agents to ensure your on time arrival and remains intact.

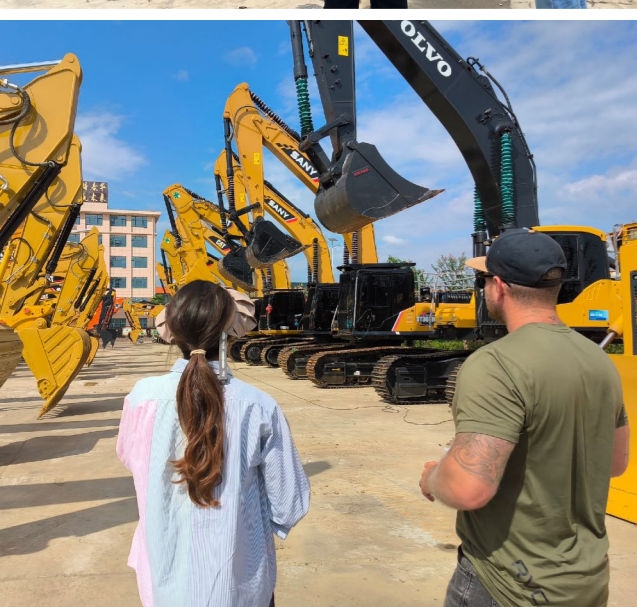
We have shipped to hundreds of satisfied clients in 30+ countries.





SHIWEN
MACHINERY

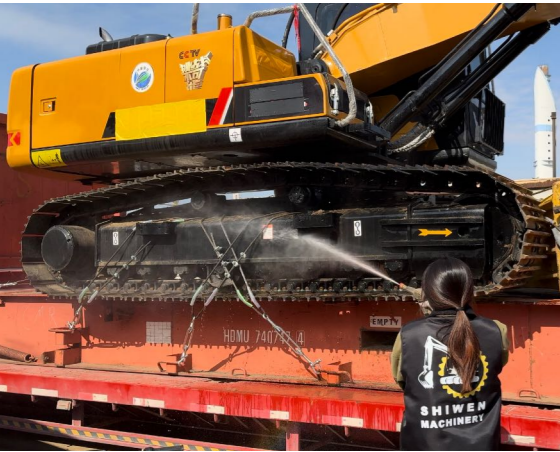
SUCCESSFUL CASES





SHIPPING METHODS

CONTAINER



FLAT RACK



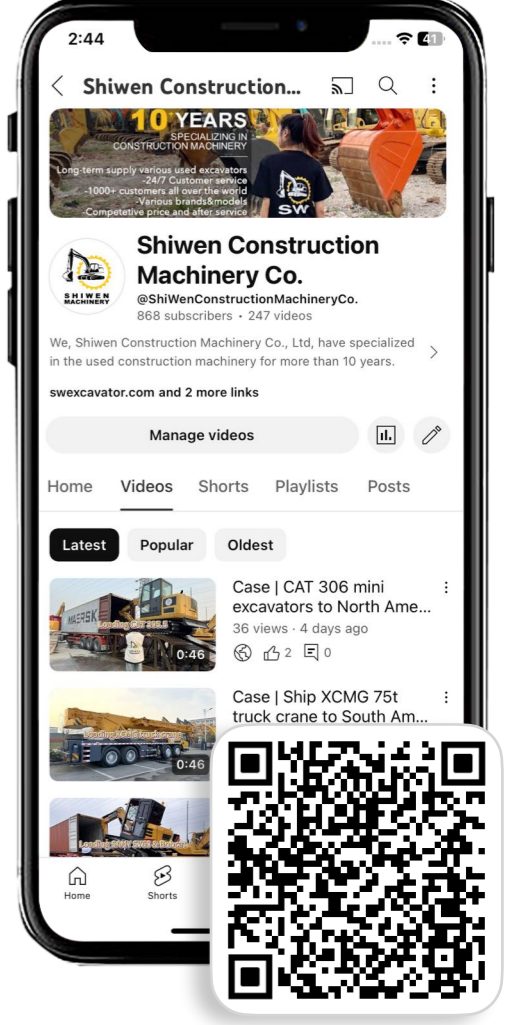
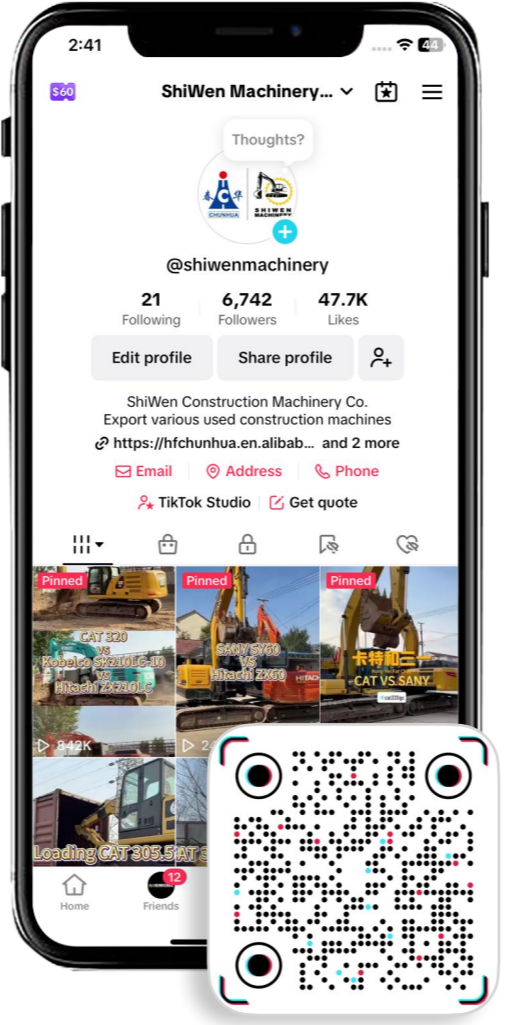
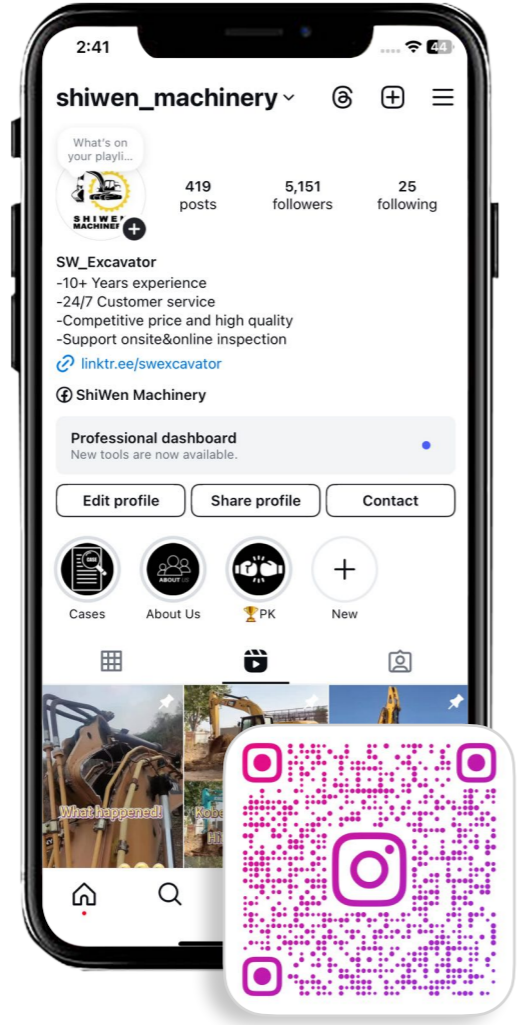
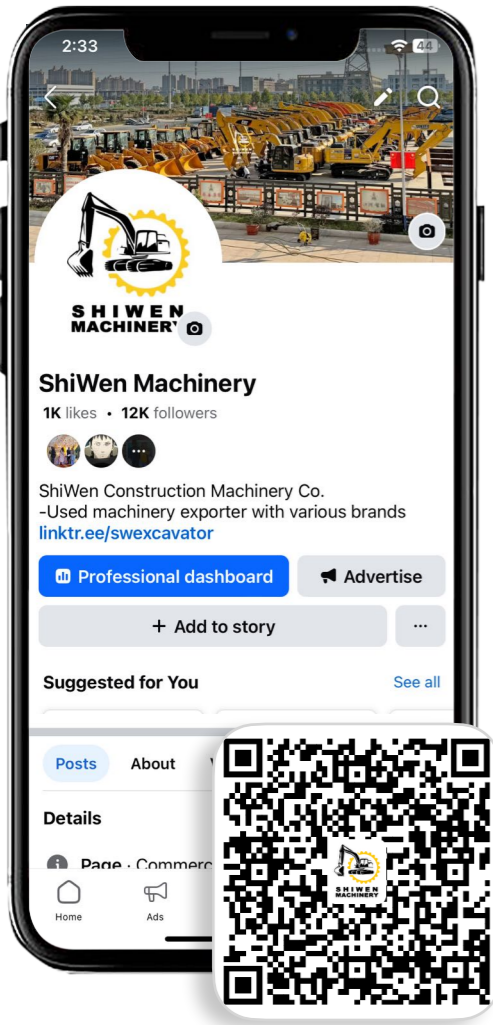
BULK SHIPPING





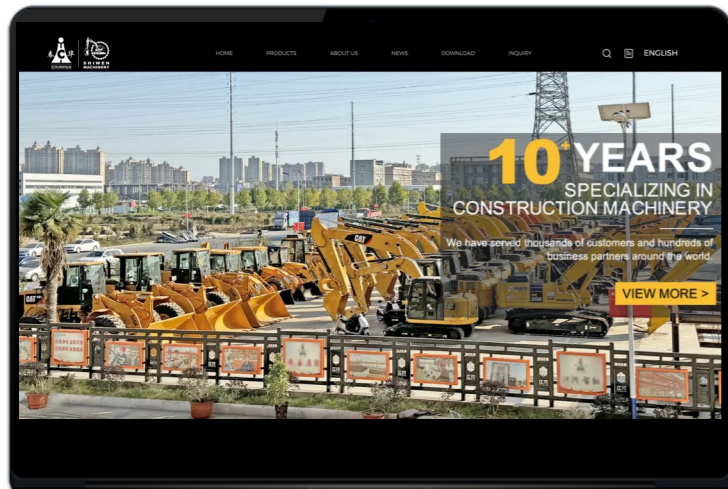
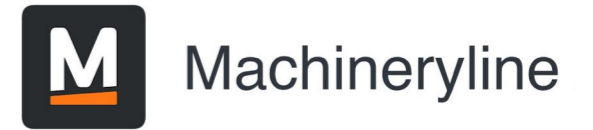
SOCIAL MEDIAS

We've won over **24k** followers on major social medias

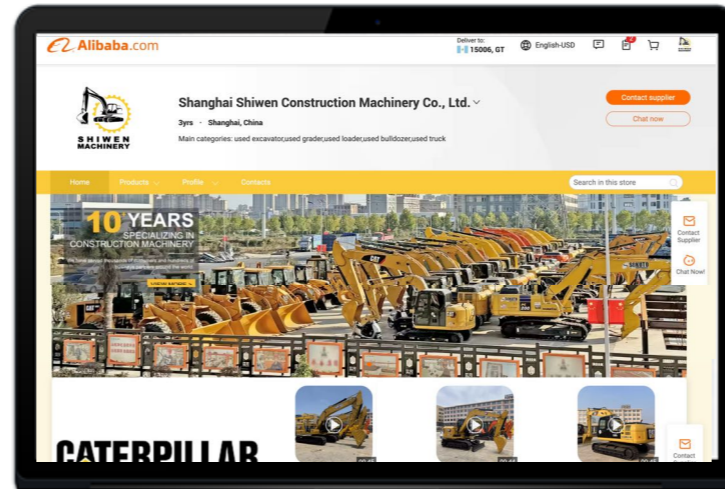




E-COMMERCE PLATFORMS



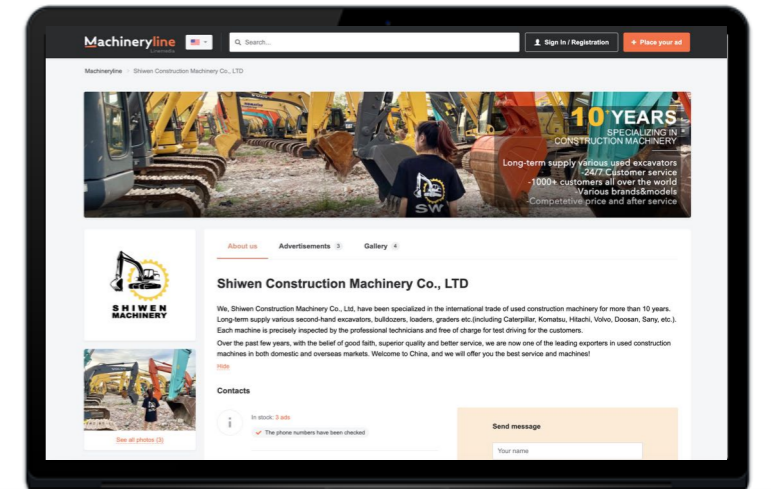
swexcavator.com



[Store1: Shi Wen Construction Machinery](#)

[Store2: Shanghai Shiwen Construction Machinery Co.](#)

[Store3: Hefei Chunhua Crane Machinery Co.](#)



machineryline.com/shiwenmachinery



**SHIWEN
MACHINERY**

THANK YOU

